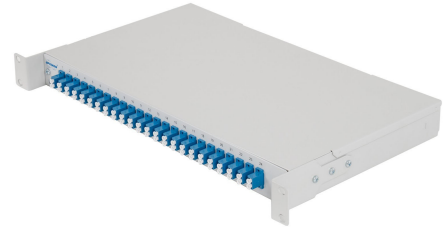


ZMPJ - Rack mount fixed cabinet

Description:

The ZMPJ Fixed Cabinet introduces a compact, low cost solution for fiber optic cable termination. The ZMPJ series is ideal for rack-mounting in confined areas such as equipment enclosures where rack space is limited. The modular system allows splicing and termination up to 96 fibers in rack height 1U.

The ZMPJ cabinet is produced from Aluminium alloy 5754 material. Benefits are excellent corrosion resistance and very high strength.



Features:

- FTTH use - holder for microtubes included
- Designed for microtubes termination
- Fixed shelf
- Changeable front panel, various coupling adaptors
- Coupling adapters mounted on the face panel
- Accommodates up to 96 fibers in 1 rack unit
- Removable top cover provides unrestricted access
- Cable strain-relief and grounding provisions
- Accepts the industry's most common connector types
- Durable powder coat finish light grey colour (RAL 7038, RAL 9006)
- Aluminium alloy 5754 material (Low weight, excellent corrosion resistance and very high strength)

Specifications:

PART NUMBER	FIBER CAPACITY1		RACK UNITS	DIMENSIONS (HxWxD) mm	SHIP WGT (kg)
	FM-12-XX	FM-24-XX			
ZMPJ - 1	12 (24)	24 (48, 96)	1	44 x 432 x 2532	1.4

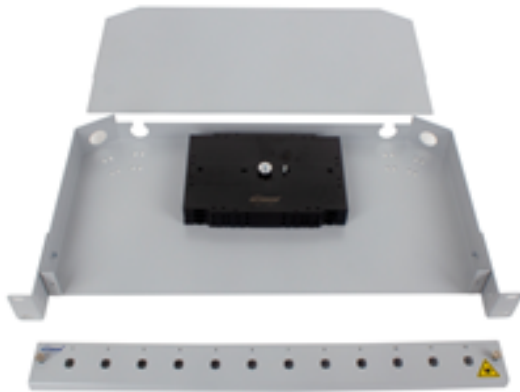
Note: 1) Fiber capacity is valid for standard connector types
2) Depth dimension with unit holders



ZMPJ-1
The cabinet without adapters



Front panel FM-24-SC (DLC)



Base unit with front panel, top cover and splice trays



Back view of ZMPJ-1

**) Note: Fiber capacity is valid for standard connector types*

Coupling panels FM series available for the common used connector adapter types in following configuration:

FM-12-XX 12 pcs ST, FC, SC, DSC, DLC, QLC, E2000, ... adapters

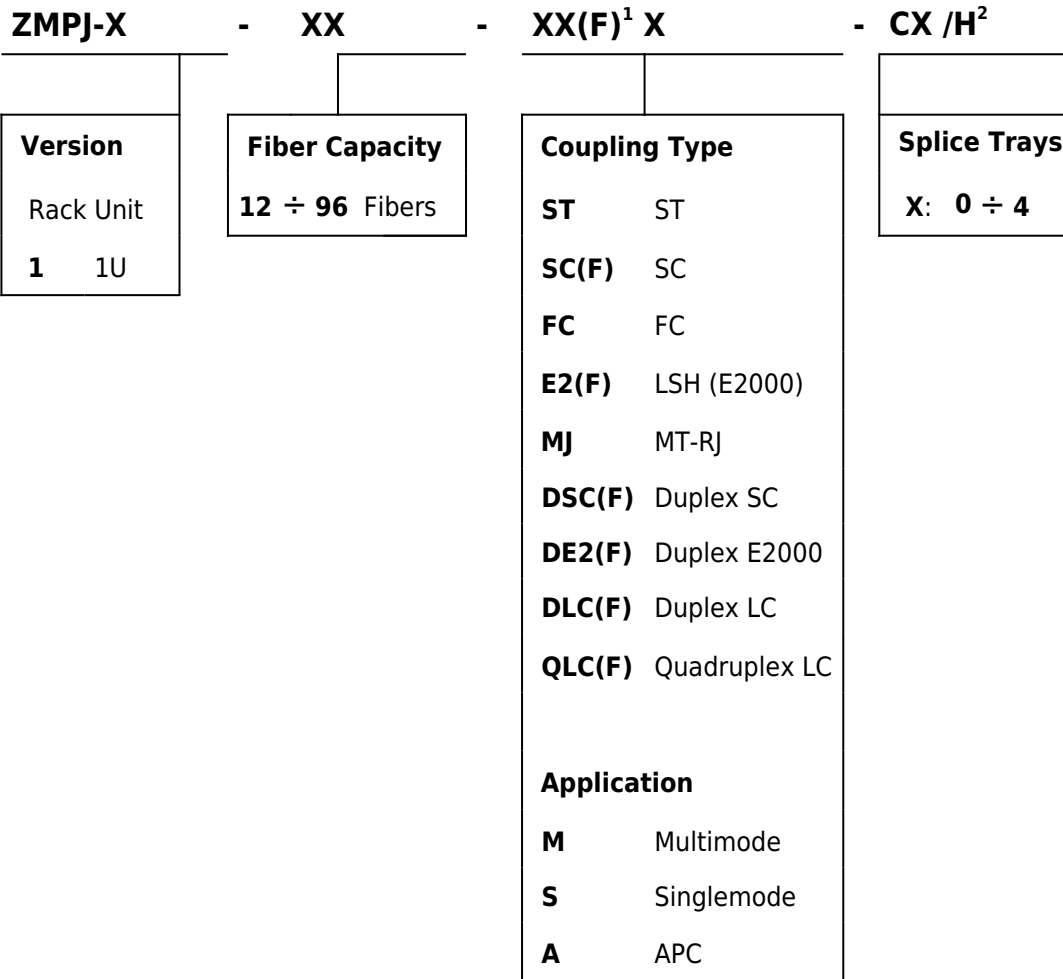
FM-24-XX 24 pcs ST, SC, DSC, DLC, QLC, E2000, ... adapters

Standard front panels	
FM-12-DSC	12x duplex SC (QLC) adaptors
FM-24-DSC	24x duplex SC (QLC) adaptors
FM-12-SC (DLC)	12x single SC (DLC) adaptors
FM-12-ST (FC)	12x single ST (FC) adaptors
FM-24-ST (FC)	24x single ST (FC) adaptors
FM-24-SC (DLC)	24x single SC (DLC) adaptors

Application:

- Rack-mount
- FTTH networks
- Customer premise remote cable drop

Ordering code:



Note:

- 1) F - Adaptors fixed by screws
- 2) H - Material-Aluminium alloy 5754